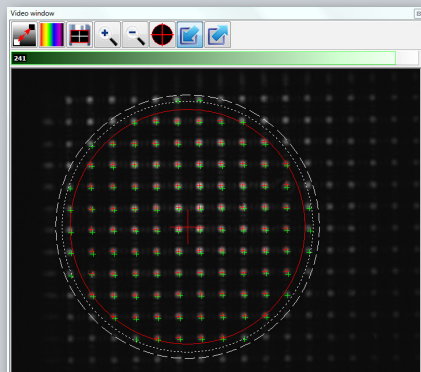
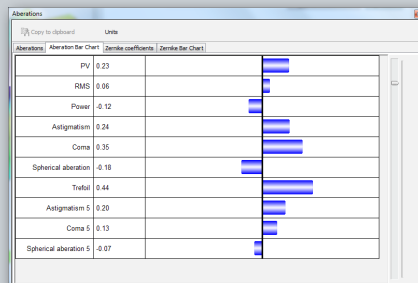


MeoSH

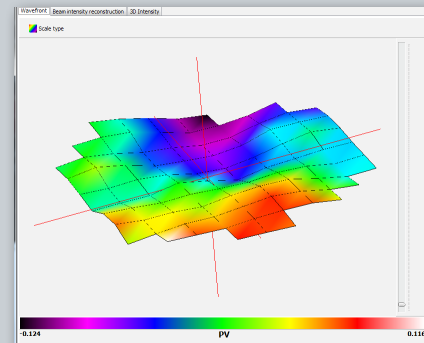
MeoSH is a sophisticated software that includes the features for hardware control of MeoSH sensors and the analysis of Shack-Hartmann images. Based on Meopta long term experience with the optical manufacturing, assembly and testing, all the features of the software were optimized according the needs of real production.



- Absolute as well as relative measurement
- Unique system of signal masking enables precise computing of aberrations



- Real time numerical and graphical (bar graph) display of aberration coefficients
- Seidel and Zernike coefficients
- Results can be saved in various formats to allow for further analysis with external software
- Database system is used to store extensive set of measurements



- Real time display of 3D wavefront, Peak-to-Valley and RMS values, Intensity, Raw camera image
- Pass/Fail classification according to user defined criteria
- Subtraction of aberration up to 5th order from the wavefront

The MeoSH software can be adapted for special applications by including additional algorithms on customers demand. We also support the development of task specific solutions of our customers.